



LONGITUDE
1° 14' E
LATITUDE
41° 5' N



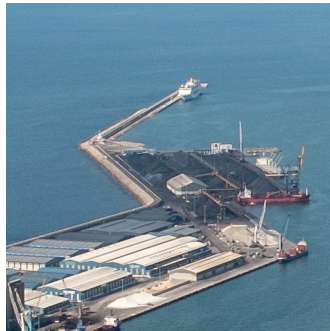
PASSEIG DE L'ESCALLERA, S/N
43004 TARRAGONA
SPAIN
Tel. +34 977 259 400
comercial@porttarragona.cat

WWW.PORTTARRAGONA.CAT



2nd edition: 2019

 **Port Tarragona**




MINERALS



 **Port Tarragona**



THROUGHPUT
5,000,000
tons/year



WHARF LOADING/
UNLOADING AREA
+170,000 m²



STORAGE CAPACITY
900,000 t



MAX DRAFT PERMISSIBLE
18.50 m



QUAY LENGTH
1,500 m



MAIN COAL HUB
IN THE MEDITERRANEAN



HIGHEST QHSE
STANDARDS



EXCELLENT ROAD
AND RAIL CONNECTIONS



ENVIRONMENTAL
FRIENDLY POLICY



VALUE ADDED
SERVICES

SPECIAL FACILITY
FOR COKE, COAL,
CLINKER AND
OTHERS MINERALS

**WELL MANAGED
STOCKPILES**

TOTAL CARGO HANDLING
PRODUCTIVITY:
3,200 TONS/HOUR

AVERAGE BY RAIL:
6,400 TONS/DAY

PAPERLESS PORT
AUTHORITY **CLEARANCE**
MANAGEMENT
FOR TRAINS

MAIN PRODUCTS:

COAL & COKE
SALT
PHOSFATES
MANGANESE
CLINKER
POTASSES
CARBONATES

VALUE ADDED SERVICES:

BLENDED
WEIGHING
COMPACTION
SORTING OF PRODUCTS
TRANSHIPMENT
CRUSTING

